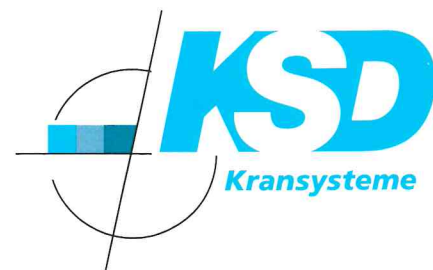


Schnellmontagekran

Fast self erecting tower crane

Grue à montage rapide




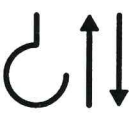

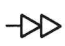
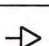


TK 3010/3

DIN 15018 H1 B3



TK 3010/3

Leistungsdaten Performance data <i>Details techniques</i>	Ausladung (m) Radius <i>Portée</i>	Tragkraft (kg) Lifting capacity <i>Capacité</i>	Max. Tragkraft (kg) Lifting capacity max. <i>Capacité max.</i>
Ausleger 30 m <i>Jib 30 m / Flèche 30 m</i>	30	1000	3500
Ausleger 32 m <i>Jib 32 m / Flèche 32 m</i>	32	900	3500

Geschwindigkeiten Speeds <i>Vitesses</i>	Heben Lifting <i>Levage</i>					
			m/min.	kg		
			42	1800		
				30	2500	
			21	3500		
Katzfahren Trolleying / <i>Distribution</i>				m/min.	20/40	
Drehen stufenlos Slewing / <i>Orientation</i>				r.p.m.	0,1 ↔ 0,9	

Allgemeine technische Daten

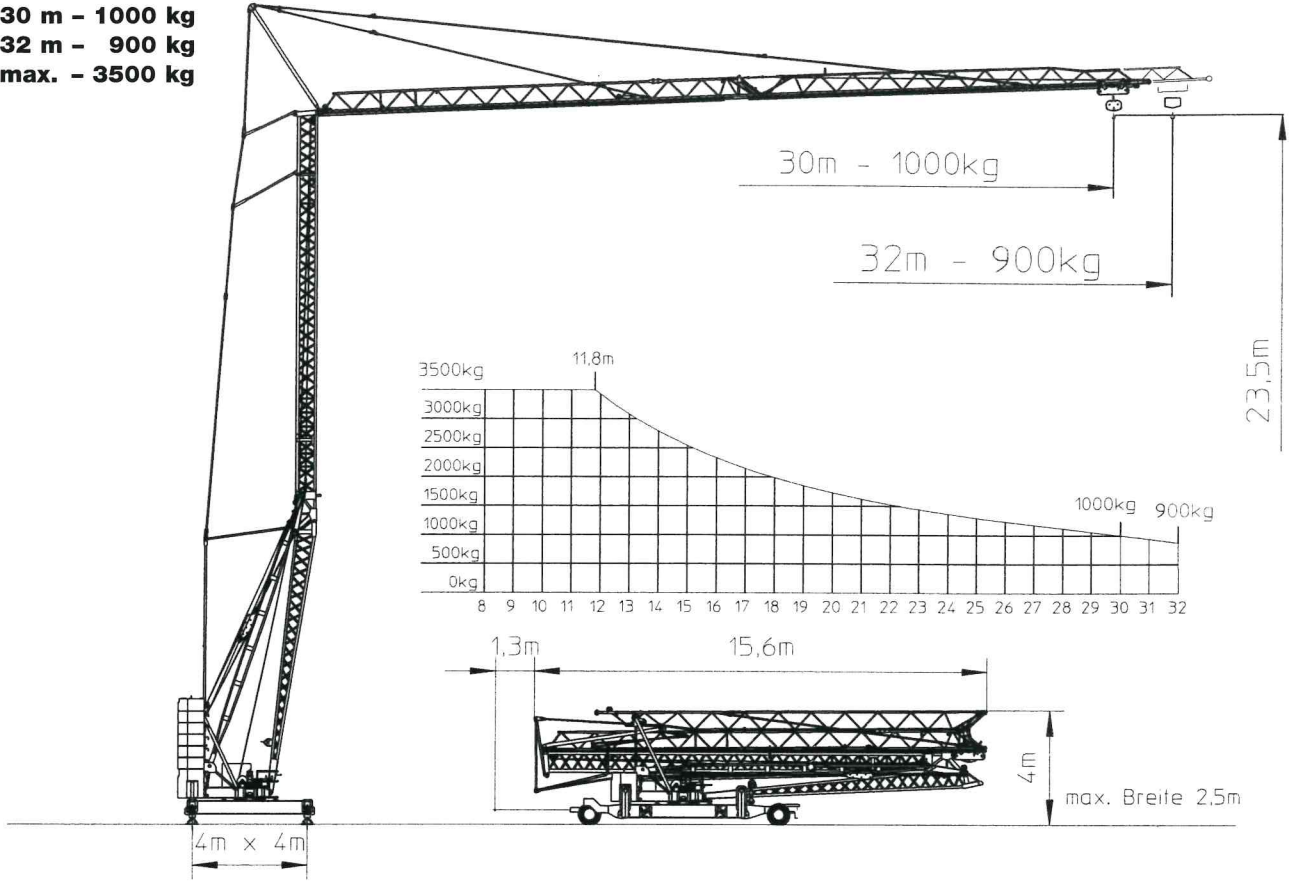
General technical data

Details techniques généraux

Konstruktionsgewicht <i>Weight / Poids de la grue</i>	kg	9.200	Ges. elektr. Leistung <i>Motor power / Puissance total</i>	kW	19
Gegengewicht <i>Counterweight / Contrepoids</i>	kg	15.000	Kabelquerschnitt <i>Cable section / Section du câble</i>	mm ²	5 x 10
Drehradius <i>Slewing radius / Rayon de giration</i>	m	2,5	Netzstrom <i>Mains supply / Réseau</i>	V/Hz	400/50
Max. Eckdruck <i>Corner load / Pression</i>	kN	128			
Spindelabstand <i>Support basis / Ecartement</i>	m	4,0x 4,0			
Spurweite <i>Track gauge / Voie</i>	m	3,8			

TK 3010/3

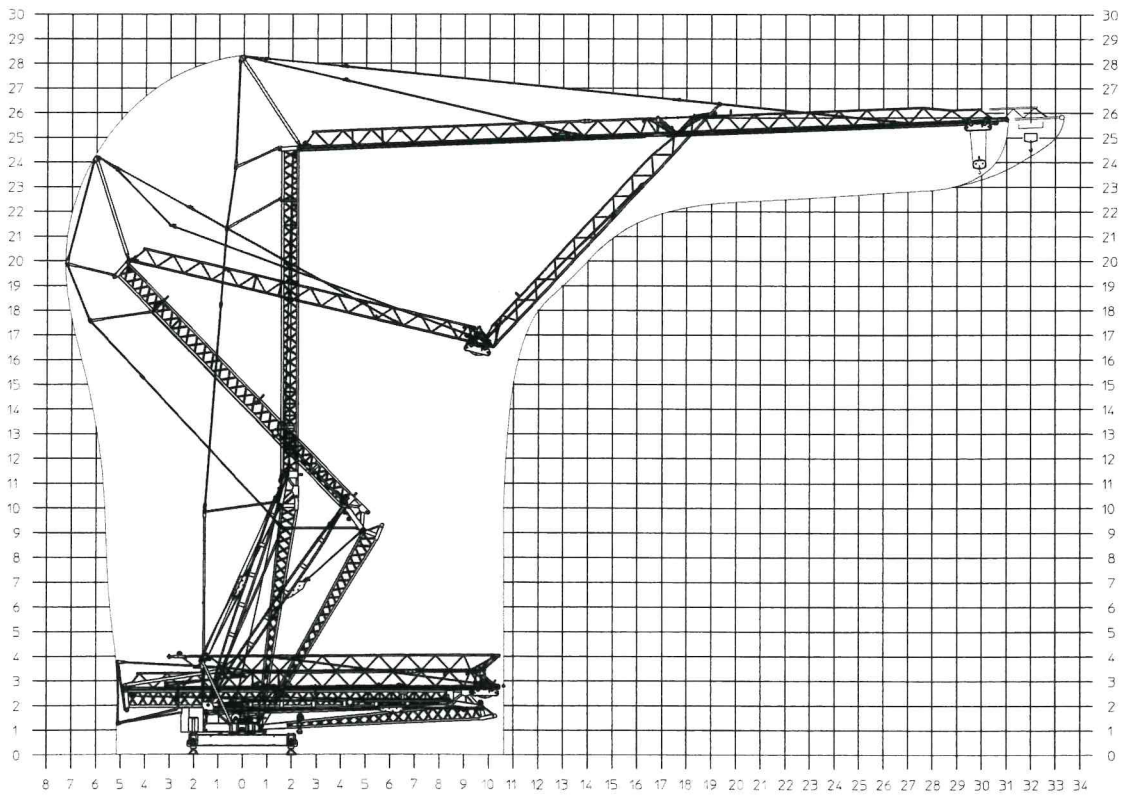
BGL 2102 - 0030
30 m - 1000 kg
32 m - 900 kg
max. - 3500 kg



Montage - Platzbedarfsdiagramm

Erection - Space required diagram

Montage - Surface utile





Besondere Merkmale

- Mit 6,2 Tonnen Teilballast verfahrbar
- Montage über Einseiltechnik in 5 Minuten
- Während Montage um 360° schwenkbar
- Auslegerluftmontage
- Automatische Katzseilnachspannung
- Alle Antriebe frequenzgeregelt (stufenlos)
- Turm und Ausleger feuerverzinkt

Technische Änderungen vorbehalten

Special Features

- Movable with partial ballast of 6,2 tons
- Erection by single rope technice within 5 minutes
- 360° rotatable during assembly
- Jib assembly above ground
- Automatic trolley cable rope tension device
- All drives frequency controlled
- Hot galvanized tower and jib

Subject to change without notice

Caractéristiques particulières

- Transportable avec lest partiel de 6,2 tonnes
- Montage par technique monocâble en 5 minutes
- Rotation possible à 360° pendant le montage
- Montage de la flèche en l'air
- Tendeur automatique de chariotage
- Frequence controlée tous les lecteurs
- Tour et flèche galvanisés à chaud

Sous réserve de modification

KSD Kransysteme GmbH

Schillerstraße 30 - 38
 D-66482 Zweibrücken
 Telefon: (0 63 32) 92 18 - 0
 Telefax: (0 63 32) 92 18 - 40
 e-Mail: ksd@ksd-kransysteme.de
 Internet: www.ksd-kransysteme.de

Überreicht durch / Presented by / Présenté par:

